



**Community  
Foundation**  
for Surrey

Together we can

**Bringing together those  
in a position to give,  
with those delivering  
local action**

# There is a hidden side to Surrey

**Surrey is often thought of as one of the best places to live in the UK.**

With its energetic vibrancy, international universities, global commerce, areas of outstanding natural beauty and close proximity to London, it is widely known for its affluence and quality of life.

However, this is only part of the story.

There is a hidden side to Surrey, unknown to many, with pockets of deprivation and places of hidden need. There are families walking a financial tightrope, people experiencing loneliness and exclusion, homelessness, human trafficking and domestic abuse.

There are children and young people missing out on education, skills and the opportunities to set them on a path to a bright future. There are Surrey residents struggling with a range of health and wellbeing issues.

There are more than 23,000 children living in poverty in Surrey.

But it need not be this way.

# Local challenges need a local solution

**The Community Foundation for Surrey is on a mission to enable solutions to issues that have, for too long, been hidden.**

Our vision for the future is of a Surrey where all communities work together to ensure that everyone has hope and that no one is left behind. A Surrey where everyone can access the support they need, when they need it, from a thriving voluntary sector in the county.

We are building a strong movement of local donors - high-net-worth individuals, families, charitable trusts and companies - connecting them with local charitable organisations working on the front line. The organisations provide both tried and tested and innovative solutions to support those who are facing some of society's most pressing issues, affecting inspirational and lasting change. We support the formation of long-term relationships enabling donors and the organisations they support to address some of the most complex and pressing needs of our communities.

Charities and voluntary organisations across Surrey provide an invaluable support to our communities.

According to recent research, 98% of us will use at least one charitable service in our lifetime, either as a beneficiary ourselves or by accessing support for a family member or loved one.

We all rely on these amazing organisations to support us with a range of health and social issues. Therefore, it is in our interests to work together to ensure our local voluntary sector is thriving and to create a better society for us.

# Every problem is different

**Before the pandemic, our ‘Surrey Uncovered’ reports identified many pockets of genuine deprivation across our county, often hidden within towns and villages normally associated with prosperity and high living standards. Our recent ‘Hidden in Plain Sight’ campaign uncovered further major issues of concern.**

The pandemic has impacted our communities, widened social divides and exacerbated inequalities that already existed. Demand for the often life-saving services provided by our voluntary groups has rocketed, and it is estimated that 60% of this huge increase is from people who have never before had to seek help from the sector.

Our next chapter will depend on our willingness to continue to work together to address the many challenges facing our county, and to give hope to everyone in Surrey. In order for us to make our vision a reality, there is an urgency for us to act now. We have ambitious plans for growth over the next 4 years. By 2025 we want to:



Increase our annual grant-giving from £4 million in 2020 to £7 million in 2025 so that we can meet the increasing level of need across the county.



Increase our overall Endowment investment from £15 million to £25 million so that we can continue to support the sector in perpetuity.



Deepen our knowledge of the needs of the voluntary sector in Surrey so we become even more effective in supporting what is needed.



Ensure that charities and voluntary groups in Surrey are thriving – not only well funded but also well run and sustainable.

# Empowering the local community

The Community Foundation for Surrey is an independent grant-making charity and the central platform for giving in the county, bringing together those in a position to give with those delivering action. Together we support local charities, and community and voluntary groups whose work addresses a range of needs to benefit our local communities.

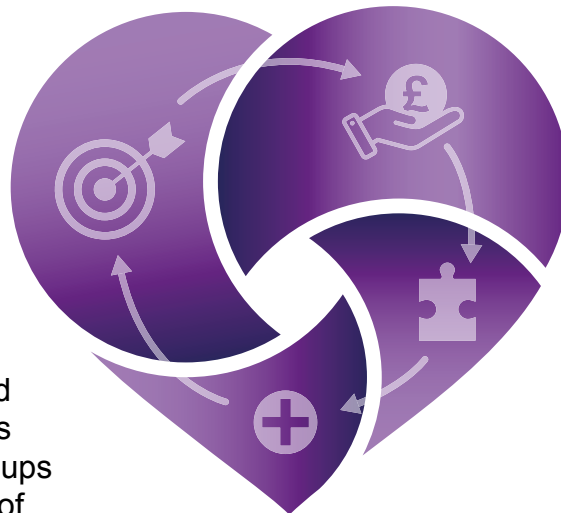
We offer a variety of giving options to enable local high-net-worth individuals and companies to get their funds to the heart of the issues that matter to them in a way that is both efficient and personal.



Real impact can be seen at a local level.



Money is awarded to enable charities and volunteer groups to tackle a range of needs across Surrey.



Local people who are passionate about Surrey want to support local causes in an effective way.



The Foundation enables donors to make meaningful connections with local Surrey charities and voluntary groups that require support.

# Delivering positive change

We are proud to generate resources to fund hundreds of community groups across Surrey every year.

In the Financial Year ending March 2021 we achieved the following:



**Over £4.5 million**  
generated in resources  
to help those in need



**Over £2.7 million**  
awarded from our  
Coronavirus Response  
Fund to support those  
most impacted by Covid-19



**Over £4.3 million**  
distributed to support  
local communities



Average value of grant  
awarded to organisations:  
**£7,738**



**650**  
grants awarded



Largest grant:  
**£87,178**

# Who do we help?

We work closely with donors to fund many types of organisations, including:

- Registered charities and CIOs
- Voluntary and community groups
- Faith groups delivering inclusive projects
- Branches of national charities which are independent and locally constituted
- Community Amateur Sports Clubs
- Not for profit organisations such as CICs with a clear social purpose



# Standing side by side



## Services we offer to charitable organisations

### Our Grants Programme

Since our inception in 2005, we have been building a network of local charitable organisations, reaching out to those who need our support and building a deep knowledge of the needs within the county. We are a critical friend to the voluntary sector in Surrey. We manage over 80 Donor Advised or Collective Funds to support local organisations whose work benefits our communities. Our grants programme regularly distributes funding to support groups addressing our priority areas. From 2022 onwards, these are:

- **Young People**
- **Wellbeing**
- **Equity and Inclusion**

We will also address Capacity Building and the Environment, in conjunction with each of our priority areas.

### Our Funder Plus Programme

Through our newly established Funder Plus programme, we not only provide funding to organisations, but also support them by providing advice and guidance in a range of critical business areas. Utilising a small team of highly skilled volunteers we offer pro bono support to voluntary groups in Surrey, enabling them to become more sustainable.

Many smaller organisations, whilst passionate and highly skilled in their specialist area of frontline service delivery, often do not have the resource for critical business skills such as financial planning, governance and marketing. Through our Funder Plus programme organisations can become better able to articulate their funding proposition, more successful in securing funding and more efficient and sustainable.





# Together making dreams a reality

Emerge Advocacy supports young people who are experiencing an emotional or mental health crisis. Joy Wright, Founder, has built an experienced team that is primarily based in the A&E departments at the Royal Surrey and St Peter's hospitals. In 2016 a £10,000 grant from the Community Foundation enabled Joy to get her vision off the ground and out into the community, providing comfort, reassurance and a lifeline to distressed young people coming through hospital doors.

Joy says:

**“I’ll never forget the day I received an email stating Emerge would receive £10,000 to kick-start our initiative! I felt like I’d won the lottery!”**

When Joy first had the idea for Emerge Advocacy in August 2016, she decided to leave her job so that she could focus on the charity. With only enough money to support her vision for the first 3 months, a Community Foundation for Surrey donor stepped in.

Joy continues:

**“When I look back over the last four years, I am amazed by how far Emerge has come - from a seed of an idea to what we have today. Your support has really enabled us to bring this dream to life.”**

The Community Foundation is proud to provide seed funding to support local charities and community groups transform their dreams into a reality.

# While you can always go it alone... together we can be part of something far, far bigger

**Within our county there are many who can help. The Community Foundation for Surrey plays a vital role in joining those in a position to give with those delivering local action, empowering the local community.**

We work together with individuals, families, businesses and charitable trusts who want to make a real and lasting difference to their local communities in a way that works best for them.

The Community Foundation for Surrey is an ideal vehicle for philanthropists wishing to structure their giving to local charitable organisations in an efficient way. We offer a straightforward and flexible alternative to creating conventional charitable trusts and we make charitable giving to local causes stress-free, easy and enjoyable.

We will support you throughout your donor journey – some of our donors have been with us for 10-15 years, and how they give has changed during that time; we have helped them every step of the way to plan giving that has as much impact as it possibly can.

There are many ways you can get involved and many reasons for giving. By working together, we can find a solution to help you reach your charitable goals and reach the causes you care about.

## Setting up a Bespoke Fund

We can work with you to set up a Bespoke Fund, tailoring the criteria and priorities for the fund to meet your particular objectives and passions. You can invest for immediate impact meaning we can distribute grants to charitable organisations you wish to support straight away. Another option is to set up an Endowment with the resulting investment returns being made available for grant-giving in perpetuity. Alternatively, you can select a hybrid of the two.

## Contribute to a Collective Fund

The Community Foundation for Surrey's Collective Funds offer an opportunity to collaborate and pool funds with other donors who all share a passion for a particular cause or geographical area of the county. By working with us in this way, you can contribute to a range of voluntary organisations across the county and regular or one-off donations of any size can be made.

## In Memory and Tribute Funds

The Community Foundation for Surrey can help establish an In Memory or Tribute Fund, enabling you to create a lasting legacy for a loved one and raise funds for the cause. We can tailor the fund themes, criteria and geography to ensure the funds are spent in a way that best represents the causes close to their heart.

## Donate to the Surrey Community Fund

This fund addresses emergency and unmet needs across the county, enabling the Community Foundation for Surrey to be pro-active and responsive to critical issues as they emerge.

Donations of any size can be made to the Surrey Community Fund at any time and, unlike any of our other giving options, this fund is expended at the discretion of our Trustees and therefore allows us, using our local knowledge and expertise, to get the funds to where the need is greatest quickly and efficiently.



## Charitable Trust Transfers

If you are a Trustee of an existing Charitable Trust, there are a number of reasons why at some time in the future you may wish to consider CFS as an alternative option to manage the assets going forward. For example, you may wish to retire and are not able to handover the running of the trust to family members or recruit new Trustees. Or your circumstances may change, and you are no longer able to carry out the administrative aspects.

We provide a range of options from assisting with grant-making to taking over responsibility for the trust completely.

## Leaving a Legacy

Although some people have a clear idea which charities they wish to support through leaving a gift in their Will, others may want to give back to their local community but are unsure exactly which charities to support. A long-term option is for the Community Foundation for Surrey to be named as a recipient in the Will, with the instruction to use the legacy to support a particular cause or areas of the county. That way, as we are hereto stay, even if a specific charity or cause you wanted to support is no longer in existence or need of assistance when the time comes, we can ensure that your original intentions are carried out.

## Corporate Giving

Many businesses want to give back to the local communities in which they operate to meet with the wishes of their shareholders or corporate social responsibility requirements. The Community Foundation for Surrey can provide an alternative solution to traditional corporate charity partnerships by offering a bespoke service to suit your business. We can work together to connect you and your staff with your local community in a way that is designed to be as simple as possible.

No matter what your financial circumstances or time restraints are, if you have a passion to support our philanthropic movement we can work together to find a solution to meet your motivations for giving.



# Nigel, Alison and family

## Sharing the joy of giving across generations

Following careers as an actuary and teacher, Nigel and Alison helped to establish a youth project in one of the most socially deprived areas of Surrey.

**“Through establishing a youth charity in Surrey, we learned how a small amount of money could make a difference to the lives of those experiencing disadvantage.”**

explains Nigel. Applying for funding for the charity brought them into contact with the Community Foundation for Surrey for the first time.

**“After making several grant applications, it was clear that the Foundation provided an indispensable service bringing together those who had money to give with those who needed funding. Most importantly, they were professional in making sure that the money was used appropriately by the charities. Establishing our own fund with the Foundation seemed the right thing to do.”**

Nigel continues:

**“Our fund includes our children, Carol and David, and their families and so our endowment will continue making gifts on behalf of the family well into the future. We have loved visiting the projects we award grants to and seeing the very positive effect that our money has. Having worked in business my whole career, I wanted the best return on our money and the Foundation was the perfect solution.”**



# Knowledge is power. The power to turn problems with deep roots into tomorrow's green shoots.

The Community Foundation for Surrey is part of a global network of community foundations, which has been established for over 100 years. The aim of community foundations is to improve the quality of life for local residents through local giving. The Community Foundation for Surrey is also part of UK Community Foundations (UKCF) – a network of 47 community foundations across the UK.

We pursue long-term change for communities in Surrey by identifying the local context, collaborating with others, applying multiple interventions and constantly learning from and adapting to new circumstances.

Since establishing in 2005 the Community Foundation for Surrey has continued to set high targets to substantially increase the level of support it is able to give to local communities across Surrey. To date, we have awarded over £18 million to Surrey communities. Our mission is to continue to grow local philanthropy to change people's lives.

We manage charitable giving, complemented by full accountability of all grant-making, including independent audit, through our Board of Trustees, which is chaired by Sir Denis O'Connor.

We have a staff team of 11 dedicated professionals who are expert in their fields. We are grateful to be supported by a group of over 55 Trustees, Vice Presidents, Ambassadors, Advisors and Volunteers who all play a vital role in helping us to connect and convene those in a position to give with those delivering solutions to our community. Our Patron is HM Lord-Lieutenant of Surrey, Michael More-Molyneux.

**“In my shrieval year as High Sheriff of Surrey, I have been able to witness first-hand the unique role of the Community Foundation for Surrey.**

**Surrey has numerous hidden pockets of real deprivation and only the Foundation has the leadership, knowledge and skills to maximise the effectiveness of philanthropy throughout our county. Together we are able to target philanthropic resources to changes lives and support those who need it most.”**

**Dr Julie Llewellyn**  
Vice Chair, Community Foundation for Surrey  
High Sheriff of Surrey, 2021-22



Together we can

# Together we can enable lasting change

Ready to find out more?

If you would like to find out more about the Community Foundation for Surrey and how you can work together with us to support local communities, please get in touch:

Please contact:

**Rebecca Bowden**

Chief Executive

[rebecca.bowden@cfsurrey.org.uk](mailto:rebecca.bowden@cfsurrey.org.uk)

01483 478086

**Claire Heath**

Director of Development

[claire@cfsurrey.org.uk](mailto:claire@cfsurrey.org.uk)

01483 906383

## Together we can

Community Foundation for Surrey

Suite 3, First Floor, Cleary Court, 169 Church Street East, Woking GU21 6HJ

[www.cfsurrey.org.uk](http://www.cfsurrey.org.uk) Registered Charity No. 1111600 | Company Registration No. 5442911

